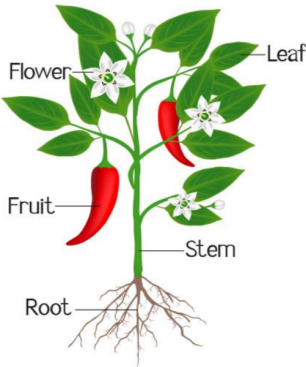




Y3 Thinking like a Scientist

Plants

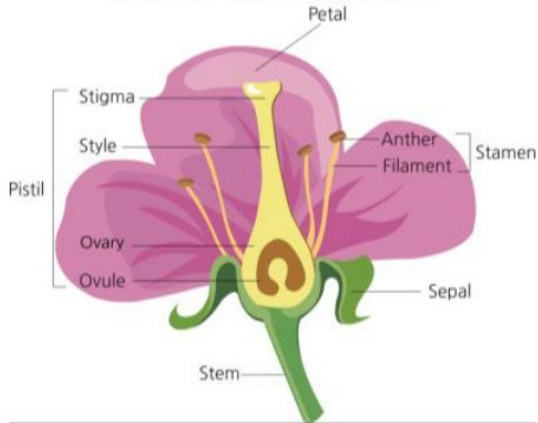
Parts of a Plant



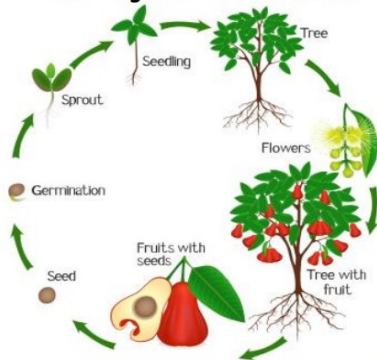
1. The roots of a plant absorb water from the soil.
2. The stem transports water to the leaves.
3. Water evaporates from the leaves.
4. This evaporation causes more water to be sucked up the stem.
5. The fruit is the part of a flowering plant that contains the seeds.

Key Knowledge:

Parts of a Flower

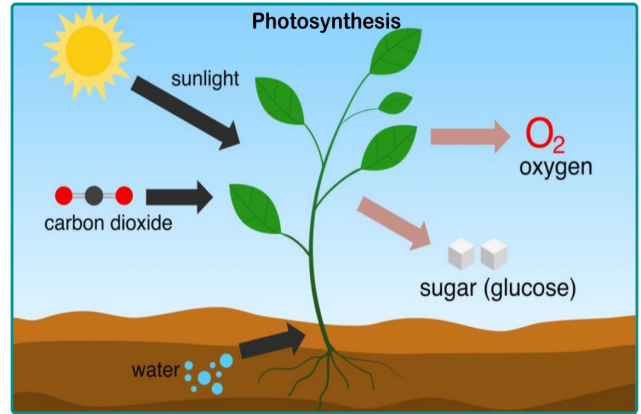


Life Cycle of a Plant



Key Vocabulary

| | |
|----------------|--|
| Nutrients | The substances found in food that all animals and plants need to grow and stay healthy. |
| Photosynthesis | The process in which plants make their own food. |
| Pollination | When pollen is moved from the male anther of a flower to the female stigma. |
| Germination | When a seed starts to grow. |
| Dispersal | In plants, how seeds are spread and moved from one place to another. |
| Fertilisation | When the male and female parts of the flower have mixed in order to make seeds for new plants. |



Learning Questions

How can I compare the effect of different factors on plant growth?

How can I identify and describe the functions of different parts of a flowering plant and how they are used in photosynthesis?

How can I investigate the way in which water is transported within plants?

How can I explore the part that flowers play in the life cycle of flowering plants?

What is the pollination process and how are different seeds dispersed?

How can I compare the effect of different factors on plant growth?

Circle the male parts:

Anther Stigma
 Filament Style
 Stamen Pistil